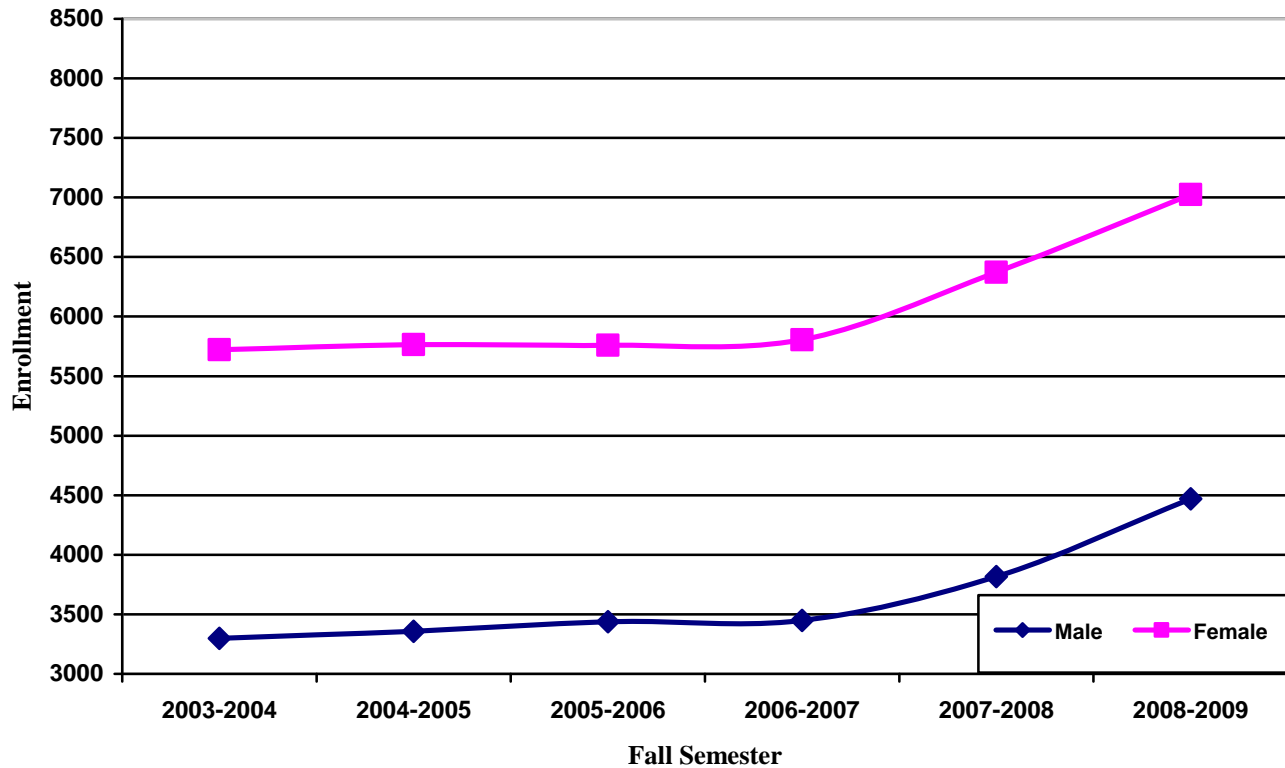


**Headcount by Gender<sup>1</sup>  
Degree-Seeking, Credit Students**



Fall Semester	Female			Male		
	Full-Time <sup>2</sup> %	Part-Time %	Total #	Full-Time <sup>2</sup> %	Part-Time %	Total #
2008-2009	34.5	65.5	7,025	39.8	60.2	4,471
2007-2008	34.7	65.3	6,373	40.3	59.7	3,816
2006-2007	33.9	66.1	5,804	36.2	63.8	3,450
2005-2006	35.0	65.0	5,760	36.9	63.1	3,437
2004-2005	42.4	57.6	5,766	46.0	54.0	3,357
2003-2004	40.1	59.9	5,722	45.0	55.0	3,297

1) Data does not include non-reported gender.

2) A full-time student is a student enrolled for twelve or more semester credits.