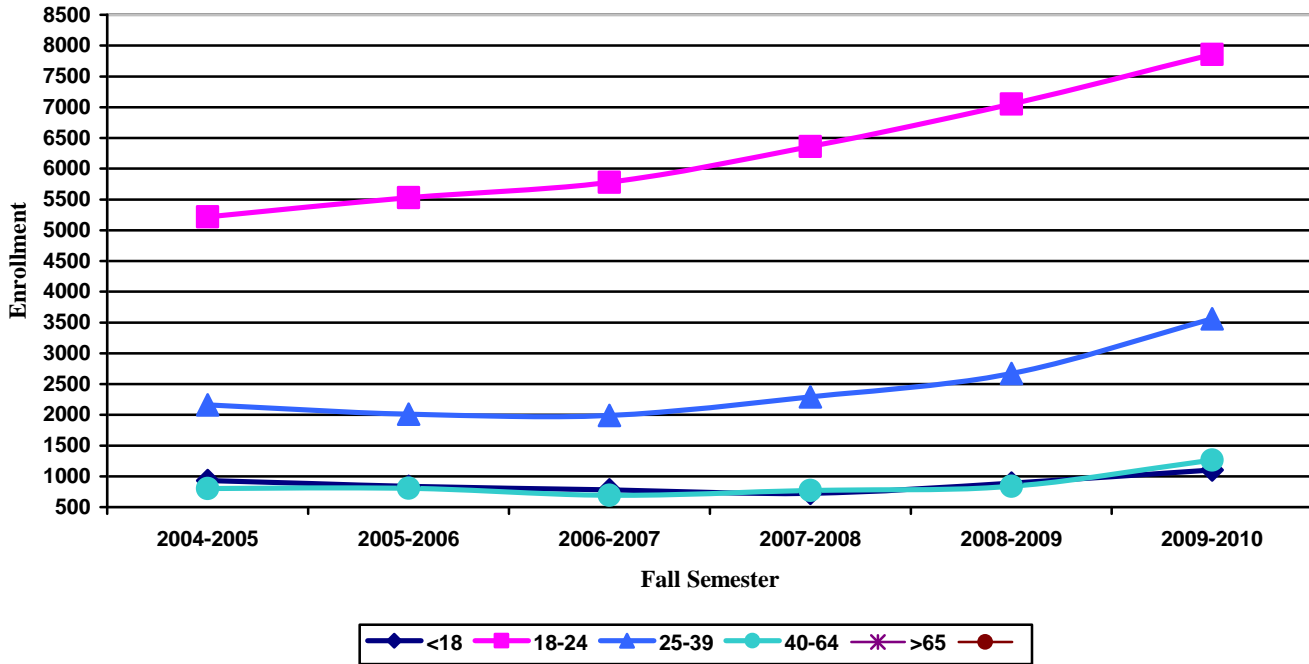


**Headcount by Age¹
Degree-Seeking, Credit Students**



Fall Semester		Enrollment									
		<18		18-24		25-39		40-64		>65	
		#	%	#	%	#	%	#	%	#	%
2009-2010	Full-Time ²	142	2.8	3,736	74.2	898	17.9	258	5.1	2	0.0
	Part-Time	960	11.0	4,120	47.0	2,660	30.4	1,004	11.5	14	0.1
2008-2009	Full-Time	95	2.3	3,359	80.1	606	14.4	129	3.1	3	0.1
	Part-Time	793	10.9	3,691	50.8	2,068	28.5	711	9.8	2	0.0
2007-2008	Full-Time	89	2.4	3,000	80.4	533	14.3	110	2.9	1	0.0
	Part-Time	634	9.9	3,361	52.4	1,761	27.4	659	10.2	4	0.1
2006-2007	Full-Time	83	2.6	2,591	80.7	435	13.5	103	3.2	0	0.0
	Part-Time	696	11.5	3,189	52.9	1,556	25.8	587	9.7	2	0.1
2005-2006	Full-Time	122	3.7	2,545	77.5	472	14.4	144	4.4	0	0.0
	Part-Time	718	12.1	2,985	50.5	1,542	26.1	663	11.2	3	0.1
2004-2005	Full-Time	168	4.2	3,010	75.4	643	16.1	170	4.3	0	0.0
	Part-Time	762	14.9	2,209	43.1	1,521	29.7	631	12.3	1	0.0
	Part-Time	862	16.4	2,298	43.9	1,481	28.3	595	11.3	4	0.1

1) Data does not include unknown age or gender.
 2) A full-time student is a student enrolled for twelve or more semester credits.