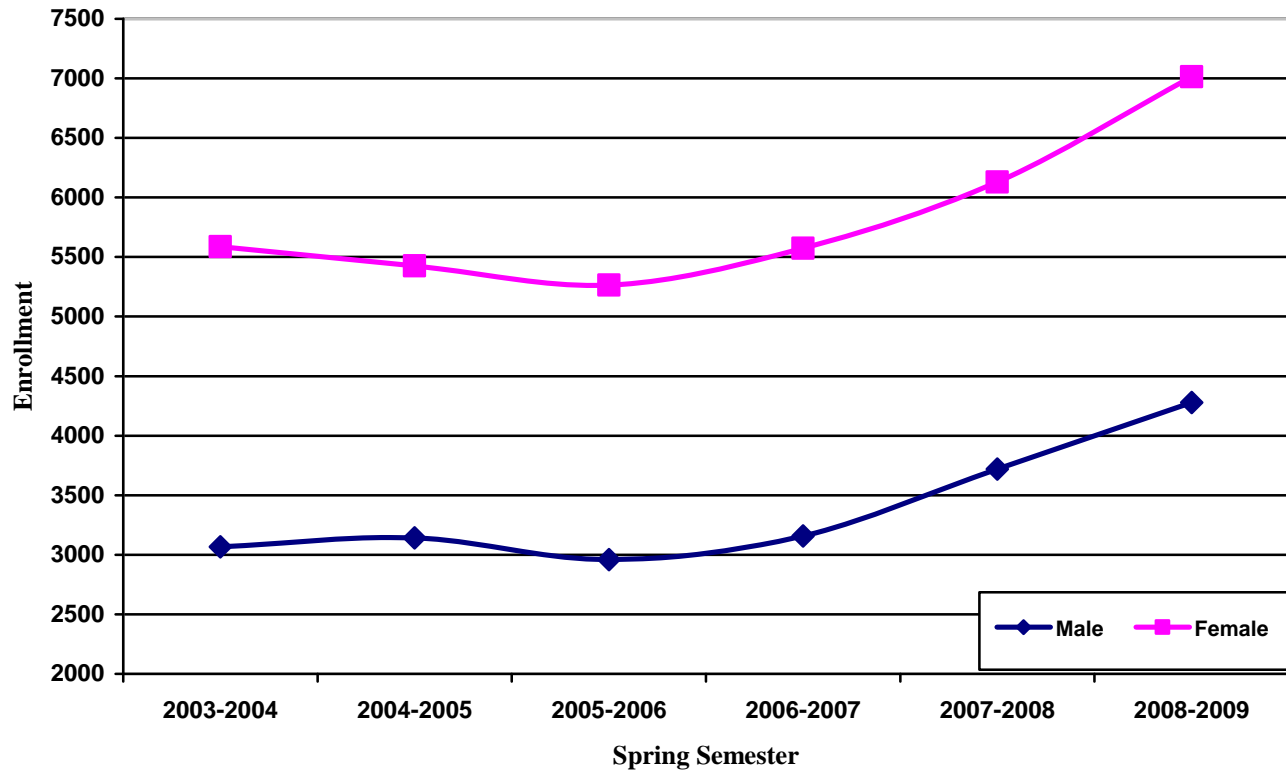


**Headcount by Gender¹
Degree-Seeking, Credit Students**



Spring Semester	Female			Male		
	Full-Time ² %	Part-Time %	Total #	Full-Time ² %	Part-Time %	Total #
2008-2009	31.8	68.2	7,013	35.2	64.8	4,278
2007-2008	33.2	66.8	6,130	37.3	62.7	3,720
2006-2007	30.7	69.3	5,574	34.4	65.6	3,157
2005-2006	30.9	69.1	5,265	31.5	68.5	2,960
2004-2005	33.5	66.5	5,425	34.9	65.1	3,141
2003-2004	37.8	62.2	5,586	40.1	59.9	3,066

1) Data does not include non-reported gender.

2) A full-time student is a student enrolled for twelve or more semester credits.