



## Center for Continuing Education

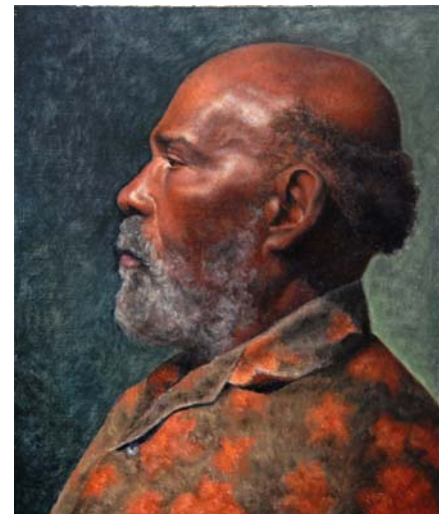
### The Nature of Light and the Construction of Form

This drawing course explores the perceptual process of vision in drawing realistic subjects. The key to drawing and painting this perceptual reality is to understand the nature or effects of light and the inherent quality of forms. The optical tradition in which masters like Valazquez, Rembrandt and Vermeer had worked resulted from their investigation into the essential qualities of light and the construct of form. In this course students will render subjects in the same optical tradition, learning to construct and model form by gaining an understanding of the character of light and by learning about what they are drawing.

The Envelope and Block-in approach to the drawing process will be introduced in this course along with an emphasis on Gesture, Contour, Light and Shadow, and understanding Form and drawing on the inside. Silverpoint media along with the surface preparation for drawing will be introduced. This is optional for students who want to explore this medium and materials will be discussed in class. Students will work primarily from still life.

Students will expect to accomplish:

- ✓ An approach to inaugurate the drawing process
- ✓ An understanding of the nature of light in modeling or constructing 3-dimensional form on 2-dimensional surface.
- ✓ A working knowledge of various dry drawing media and their surface preparations.
- ✓ An understanding of design and composition.



**Dates:** Tuesdays (8 sessions)

- January 10 – February 28, 2012
- March 20 – May 8, 2012

**Time:** 2:00pm – 4:30pm

**Cost:** \$180 Plus Materials (List supplied at registration)

**Location:** Edison State College, Lee Campus, room to be announced

**Instructor:** Catherine Lucas- Catherine Lucas is a painter in the realist tradition. Her artistic education includes a BFA from Hofstra University in New York, and an MFA from New York Academy of Art in New York City. At the New York Academy of Art, Catherine studied with accomplished figurative artists, Steven Assael, Harvey Citron, Patrick Conners, Jon DeMartin, Martha Erlebacher, Alyssa Monks, and Edward Schmidt. After receiving her Masters degree, she continued her studies in classical realism under the tutelage of Anthony Ryder at the Ryder Studio School in Santa Fe NM. Her paintings are exhibited in New York, Santa Fe and Florida. Catherineann.com

**Seats are limited, so register today!**

**Advance registration and payment is required**

**For registration form and information, call 239-489-9235,**

**Email [celee@edison.edu](mailto:celee@edison.edu)**

**OR download from [www.edison.edu/lee/ce](http://www.edison.edu/lee/ce)**

**Requests for refund one week prior to the first class meeting will be granted. If you have a Higher One card through Edison the refund will be transferred to your Higher One Account. Due to the short-term nature of most Continuing Education programs, refunds will not be granted on or after the first class meeting.**