



Student Support Services Program Pre-Application



Program Description:

- The Student Support Services Program (SSSP) at Edison State College (ESC) provides opportunities for academic development, assists students with basic college requirements, and serves to motivate students to complete their postsecondary education. The goal of the SSSP is to increase the retention and graduation rates of participants and to assist them in the transition from one level of higher education to the next.
- A variety of program services (listed below) are provided to assist each participant in reaching his/her postsecondary education goal. The Edison State College SSSP provides financial incentives in the form of grant aid, SSSP scholarships, tuition fee exemptions, and textbook loans to eligible participants. All services and activities are provided at no cost to eligible participants.
- All SSS participants are expected to “actively participate” in program activities to remain eligible for services and incentives. This expectation is based on the recognition that the services provided through the SSSP are limited to selected students and funding is available to support 200 participants annually. As a result, all students accepted into the program are required to participate in check-ins, advising, counseling, tutoring, workshops, and other activities deemed necessary for student success.
- Students are chosen to participate based on Federal guidelines which include first generation in college status, family income, disability, and need for academic services. Two-thirds of all participants must fit both first-generation and low-income guidelines listed below.



Services Provided to SSS Participants

The Student Support Services Program offers many services to assist students in reaching their educational goals. These services include:

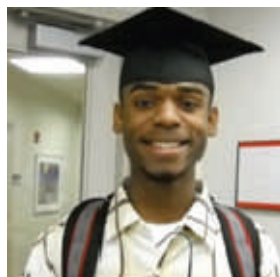
- | | |
|---|----------------------------------|
| ▶ Academic Advising | ▶ Resource Center |
| ▶ Educational/Personal Support | ▶ Transfer Planning |
| ▶ Counseling Referral | ▶ Career Exploration |
| ▶ Peer Tutorial Referral | ▶ Cultural Activities |
| ▶ Professional Math/Science Tutoring | ▶ Financial Literacy |
| ▶ Peer Mentoring Program | ▶ Computer Lab for TRiO use only |
| ▶ Financial Incentives, including scholarships, tuition exemptions, and a textbook/calculator/digital recorder loan program | |

2009-2010 Low- income Federal Guidelines:

- 1 person, taxable income to \$16,245
- 2 people, taxable income to \$21,855
- 3 people, taxable income to \$27,465
- 4 people, taxable income to \$33,075
- 5 people, taxable income to \$38,685
- 6 people, taxable income to \$44,295
- 7 people, taxable income to \$49,905
- 8 people, taxable income to \$55,515

(Based on the family’s combined taxable income)

The best services provided by the SSSP are a place to call home, people who care, and a smile when you come in our door!



Interested in the Student Support Services Program?

If you can answer “Yes” to the following questions, you may qualify for this program.

1. Are you a newly admitted ESC student planning to attend college for the first time?
2. After completion of your AA/AS at ESC, do you plan to obtain a Bachelor’s Degree?
3. Are you a U. S. Citizen, national or permanent resident, eligible to file for federal financial aid?
4. Do you have a need for academic support services?
5. To be eligible for SSSP enrollment, **ONE** of the following categories (a, b, **or** c) must apply:
 - A. Are you considered low income according to the federal guidelines listed on the reverse side of this form? **OR**
 - B. Are you a first-generation in college student? (the parent(s) or legal guardian(s) who raised you and/or contributed to your support did not earn a Bachelor’s Degree) **OR**
 - C. Do you have a documented disability on file in the ESC Office of Adaptive Services?

If you answered “Yes” to the questions above you may qualify for the SSSP. **Please complete this pre-application and bring it to the Student Support Services Program Office located on the Lee campus in Taeni Hall, Room 258.** Students attending classes at the ESC regional campuses or centers are eligible to apply but must be able to participate in some services and activities on the Lee Campus.

Incomplete Applications Will Not Be Considered					
First Name		Middle		Last Name	
Banner ID		DOB		Age	
Edison Email	@edison.edu			Phone #	
					YES
					NO
Did you graduate from high school and receive a standard diploma or receive a GED?					
Are you a newly admitted ESC student planning to attend college for the first time?					
After earning your AA/AS degree are you planning to complete a bachelor’s degree?					
Are you a U.S. Citizen, national or permanent resident, eligible to file for financial aid?					
Will you need academic support services such as tutoring, help with course selection, etc. ?					
Are you considered low income according to federal guidelines (on reverse page)?					
Have you completed your FAFSA? If yes, what is your EFC? ____					
Are you a first generation in college student?					
Do you have a documented disability filed in the ESC Office of Adaptive Services?					
Referred to SSSP by: Upward Bound __, CROP __, Scholar’s Program __, Immokalee Foundation __, Heights Foundation __, Quality Life Center __, Other (list agency or organization) _____					

The Student Support Services Program (SSSP) at Edison State College is currently funded 100% through the U. S. Department of Education in the amount of \$285,305 annually and is offered to eligible students at no cost to participant. The SSSP provides services to qualified participants designed to enhance their college experience and assist them in completing an Associate’s Degree and transferring into a Bachelor’s Degree program. Eligibility for the Program is based on documented criteria, which includes certification of low-income/first generation/disability, and citizenship status.

Edison State College is an Equal Access, Equal Opportunity institution. Programs, activities, and facilities of the College are available to all on a non-discriminatory basis, without regard to race, color, religion, sex, age, disability, marital status, and national origin. Questions pertaining to educational equity, equal opportunity or equal access should be addressed to the Associate Vice President of Human Resources, 8099 College Parkway, P.O. Box 60210, Fort Myers, Florida 33906-6210; Telephone (239) 489-9294.

Student Support Services Program Taeni Hall, S-258 8099 College Parkway, Fort Myers, FL 33919	Edison State College (239) 489-9112 sssp@edison.edu
---	---